

**LUMSDEN'S FLEXX FLOW BELTS  
 REDUCE FURTHER PROCESSING  
 COSTS IN POULTRY PLANTS**

During the past spring and summer, Lumsden belts were compared to other manufacturer's belts to see how the Flexx Flow belts performed in further processing plants.

The results were decisive, if not impressive. As it turned out in all cases, Lumsden Flexx Flow's unique hinge design provided at least as long a life, and in most cases, 30 to 100 percent longer life in identical applications. With Flexx Flow's smallest reverse bend in the industry, belts were able to resist the bending and breaking of the "z" bend. With less broken wires this translated into longer life of the conveyor. The longer life also

means less time spent repairing and replacing the belting. Belt costs and maintenance costs went down.

An even larger benefit was that it was deter-



mined that most conveyors could be modified slightly, gaining even additional belt life.

This service is available to other plants as a no cost/no obligation service, provided by the BS&k Company.

These companies found that a slightly lower initial cost of the belt, reduced maintenance time and costs, and improved "up-time" paid huge dividends for their company.

Lumsden offers standard belts for the further processing industry, sprockets, idlers, rollers and any special product that may be required to operate your plant. Give us a call to discuss any belt problems that you may be experiencing. Just because "it's always been that way", doesn't mean we can't work together to streamline your process, reduce your downtime, improve productivity and eliminate a headache or two.

**Inside this issue:**

Gremer Metal Industries	2
Sunnex Mounts	2
Sunnex Lamps	2
Wiremation Sprockets	3
BS&k Can work for you	3
Material handling	3
Lubricants & Additives	4

**Special points of interest:**

- Productivity increases with Lumsden's Flexx Flow Belts
- Gremer offers total solutions to your conveying problems
- Wiremation Introduces standard sprocket driven mesh belts
- Sunnex goes on-line with mount designer
- Lubri-Lab grease & additives extend PM intervals



## GREMAR METAL INDUSTRY SETS THE STANDARD IN MOTION

Process Conveyors  
Filtering Systems  
Stairways & Platforms

Ermanco Line Shaft Conveyors  
Blenders & Grinders  
Panel Boxes

For nearly a quarter century Gre-mar has been the industry hall-mark of quality and service when it comes to process equip-ment, material handling systems and specialty fabrications for the food, dairy and paper industries.

From our headquarters in Green Bay, Wisconsin, we offer clients a full range of services from en-gineering to installation.

When it comes to putting time back in your schedule, we un-derstand that your business de-pends on making and selling your products, not just buying our equipment. That's why, for many fortune 500 companies to small family run businesses, cus-tomers have come to rely on our total solution business approach.

At Gre-mar we're dedicated to

creating breakthrough solutions to make your business more suc-cessful. Our products are more than just equipment. They repre-sent a new way of thinking.

From concept development to project follow-up, from raw product to shipping, Gre-mar has the people, experience, products and knowledge to make your next project a success.

## SUNNEX INTRODUCES ON-LINE MACHINE MOUNT SELECTOR



Use our design wizard and submit a quote! Our sales staff will contact you within 48 hrs. to process your quotation.

For over 25 years, Sunnex, Inc. has been manufacturing prod-ucts for a wide variety of appli-cations in the industrial, assem-bly, medical and consumer mar-

kets. Our customers include some of the most recognized names in business today.

Sunnex offers products that pro-

vide direct leveling and insulate machinery against the adverse effects of vibration and struc-ture-borne noise. The product spectrum represents the ideal solution for all types of applica-tions.

Visit us at <http://www.sunnexonline.com/wizzard/Index.htm> to use the

## SUNNEX LAMPS HELP MAINTENANCE SEE

The Sunnex halogen task lamps, and in particular the HS700 series have been used by maintenance personnel to see into areas where they could not see before.

By permanently mounting these moisture resistant lamps in areas where light is needed to make criti-cal adjustments, personnel can now see exactly what needs to be re-

paired or adjusted.

The job can be accomplished quickly and correctly, return-ing the equipment to produc-tivity faster and properly.

Ask how we can fit these or other lamps into your appli-cation.

1 800 634-1114



## WIRESATION "GIVES TEETH" TO SPROCKET DRIVEN MESH BELTS

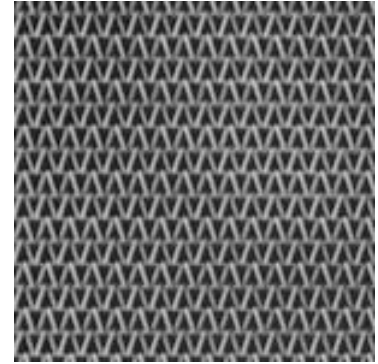
Wiremation introduces a line of sprocket driven mesh belts. By incorporating a Balanced Weave Belt with a corresponding sprocket, positive tracking can be achieved.

This belt is used in the food industry where a tight transfer or exact timing is needed. The sprocket eliminates belt slippage when the product or process creates slippery conditions. The teeth of the sprocket meshes into the openings of the belt to create

a positive drive. Much less expensive than heavy chain edge belts.

Don't be fooled by others that tell you it can't be done or they are the only company that can make this happen. Wiremation has been doing this for years and has many satisfied customers.

Now, we offer a standard product line of meshes and sprockets. Let us show you what we can do!



PB 18-16-16, PB30-24-17,  
PB30-31-16, PB42-36-18,  
PB48-52-17, PB60-48-18/20  
\* others coming soon.

## BS&k COMPANY INTEGRATES LOCAL SERVICE WITH NATIONAL KNOWLEDGE

The BS&k company has been providing local service to companies for 4 years.

Knowledge that we have gained from national companies has allowed us to service companies locally, the way most national companies get serviced. Let us work with you and provide the following:



- Plant Surveys
- Complimentary Product lines
- Competitive Pricing
- On-site troubleshooting
- Installation Assistance
- Order History Analysis
- Stocking Plans

Contact us today and let us show you what we can do for you. No cost / no obligation!

(800) 634-1114 (Toll free)  
(704) 365-3578 (Fax)

[www.bsandk.com](http://www.bsandk.com)

[Bob@bsandk.com](mailto:Bob@bsandk.com)

**NEW**

## SANITATION & MATERIAL HANDLING



# LUBRI-LAB GREASE AND ADDITIVES REDUCE BREAKDOWNS AND EXTEND PM INTERVALS

For many years, **Lubri-Lab** has been offering quality products that exceed the Highest Market Standards while keeping with leading edge technology. Concerned about the environment as well as our customer, **Lubri-Lab** has formulated many products necessary to resolve specific problems in the Industry. We offer a complete line of quality greases & additives, which supply exceptional performance under all adverse conditions. (High speed, load, Impact & water wash out, and heat) In-

cluding Food Grade Products. The B S&K Company is proud to be a distributor of **Lubri-Lab** in NC, SC and Tennessee. We will be glad to help you make a lubrication trail. We use bearing analysis that will provide you extended bearing and grease life. Helping you to be proactive in your maintenance.





We also offer oil analysis services, as well as lubrication courses, that will help your maintenance department to control costs while improving efficiency. **The B S & k Company** values highly the business you place with us and we remain committed to continuing to supply you with quality products and technical support. Let us know if you would like a sample, a demonstration or more information on this remarkable product line.


**BS&k Company**  
 MANUFACTURERS REPRESENTATIVE  
 2248 Lawton Bluff Road  
 Charlotte, NC 28226

[www.bsandk.com](http://www.bsandk.com)

*In motion for you . . .*

 **Lumsden & Wiremation**  
 Conveyor Belts

 **Quantik Industrial Corporation—Induction Heat Treating**

 **Toter Incorporated** Container Handling Systems

Task Lighting   
 Machine Mounts  
 Vision Inspection Systems

Powdered Metal Parts   
 Conveyors, Fabricators 

Conveyor Components 

Remco Sanitation Items 

**CAPITAL EQUIPMENT - MAINTENANCE ITEMS - PRODUCTION PARTS - ADVERTISING**  
 2248 Lawton Bluff Road, Charlotte, NC 28226 (800) 634-1114[Phone] (704) 365-3578[Fax]  
 WWW.BSANDK.COM EMAIL BOB@BSANDK.COM