

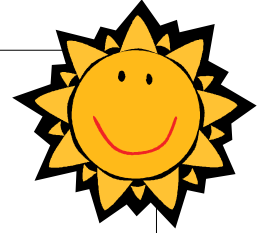
BS&k Company

MANUFACTURERS REPRESENTATIVE

IN MOTION FOR YOU . . .

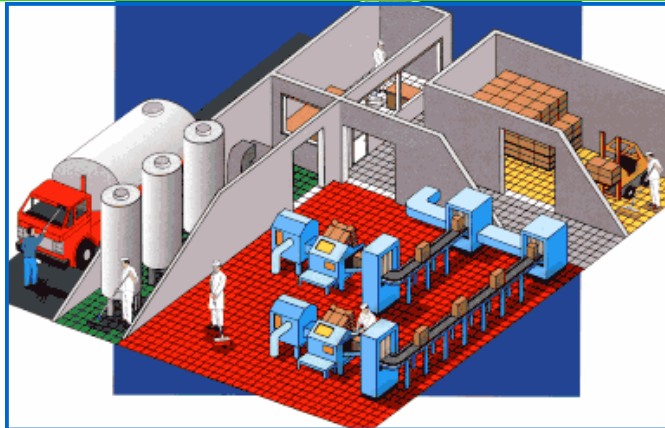
Summer 2012

Volume 12, Issue 3



REMCO PRODUCTS

REMCO KEEPS YOUR WORKPLACE CLEAN AND SANITARY



Products from **REMCO** can be color-coded to help divide the production cycle into different zones or tasks. By identifying these as different cleaning areas, the movement of contaminants around the production area can be effectively blocked.

Let **BS&k** show you how **REMCO** products can clean up your sanitation problems and let you get back to what you do best, that is, running your business.

And now there are 8 distinct colors to keep your work zones separate!



Inside this issue:

Wrabacon can automate your application	2
Conroll moves product without damage	2
POBCO brings out the 2012 catalog	3
Lumsden's drive components save you \$	4
MeltPro if you glue it, we can do it.	4
Wiremation has the right track for you.	5
BS&k Let us do the work for you	5
POBCO's Leveling Mounts	6

Special points of interest:

- **Wrabacon** updates its website
- **Lumsden** solves the dreaded problems of "belt snagging".
- **Wiremation** Introduces standard sprocket driven mesh belts
- **REMCO** Color code your plant to reduce your sanitation problems
- **POBCO Plastics** Introduces the 2012 Catalog



WE PROVIDE SOLUTIONS TO YOUR AUTOMATION CHALLENGES

Conveyor System Automation Design and Manufacturing Company

For 25 years Wrabacon Inc. has been designing and manufactured conveyor systems for a variety of markets. These markets consist of food manufacturing companies, pharmaceutical companies, consumer goods companies and personal care. Many of these companies require stainless steel conveyors and components to meet the demanding needs of sanitation and cleanliness that has become primary concern for food and pharmaceutical safety.

Wrabacon Inc. stainless steel conveyor systems are designed for ease of cleaning and sanitation. Stainless steel frames are engineered with open design to allow for your sanitation team to effectively clean and sanitize for the next working shift. All designs meet or exceed USDA, FDA and BISC standards.

Stainless steel conveyor system not required, Wrabacon can fabricate and design a conveyor system utilizing mild steel frames and non wash down components which will provide a conveyor system to move your product through your manufacturing, process or packaging area.

A full range of modular plastic belts, table top chain, wire and synthetic belts are available and are selected for the best solution for your conveyor system. All conveyor system controls, automation and PLC programming are designed and implanted in house by our experienced electrical department. Mild steel, fiberglass and stainless steel cabinets are all available to meet your conveyor system requirements.

Automated Conveyor System Features and Benefits

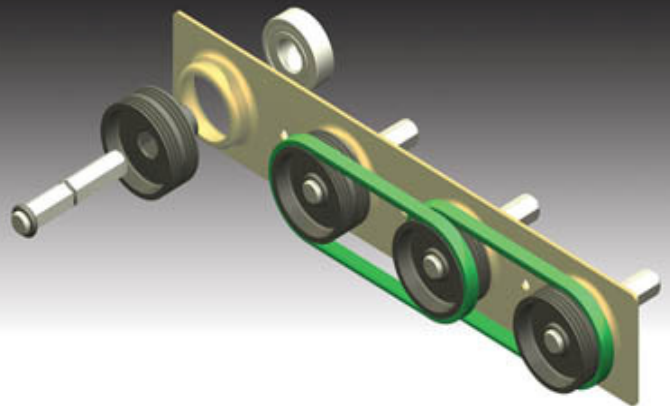
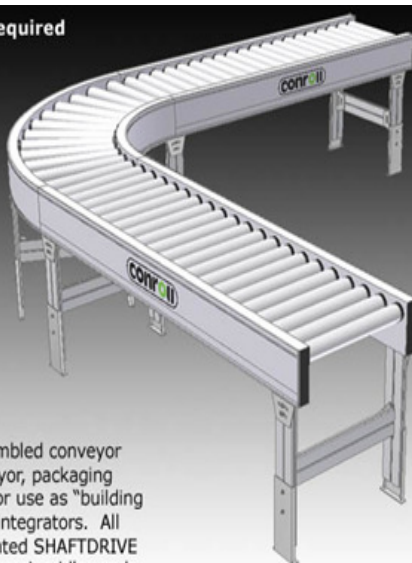
Complete product handling and automated conveying systems
Each System designed to meet the specific requirements of the customer and product

Various types of conveyors available based on customer requirements
Mild steel, painted steel and stainless conveyors available



CONROLL PRODUCES ACCUMULATING CONVEYORS WITH LOW AND ZERO BACKPRESSURE

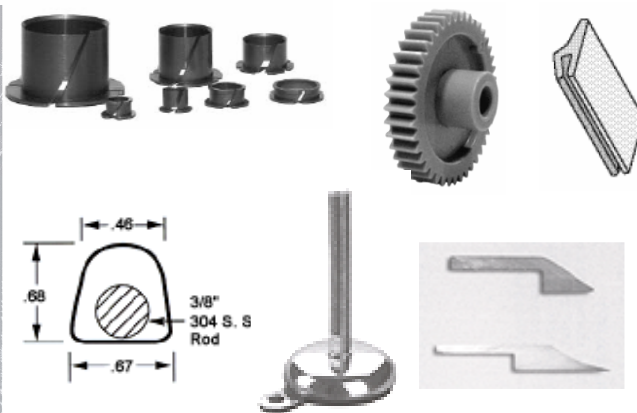
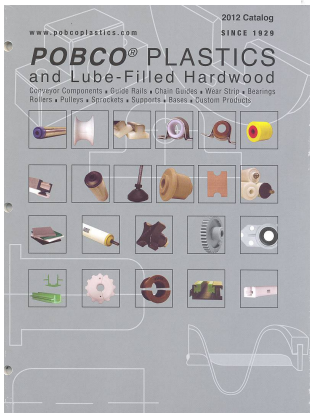
- No exposed belts or guards required
- Safe, low voltage 24 VDC brushless motors
- Perfect for transport and zero pressure accumulation
- IP65-rated sanitary modules for wash-down and food applications also available



Conroll produces a variety of pre-assembled conveyor modules for use by OEMs in the conveyor, packaging and processing industries, as well as for use as "building blocks" for material handling systems integrators. All of our modules are based on the patented SHAFTDRIVE design, utilizing precision ground ball bearing idler and drive cartridges mounted within the conveyor side frames.



POBCO PLASTICS LATEST CATALOG HAS MANY NEW ITEMS TO REDUCE YOUR FRICTION AND YOUR COSTS



POBCO Products

- Plastic Guide Rails
- Plastic, Stainless Steel Brackets
- Rollers (Plastic, Steel & Wood)
- Bearings (Plastic & Wood)
- Plastic Sheet Stock
- Plastic & Wood Rod Stock
- FEP Shrink Fit Roll Covers
- Special Rollers
- Teflon Coated Fabric/Tapes/Belts
- Pressure Sensitive Plastic Adhesive Wear Tape

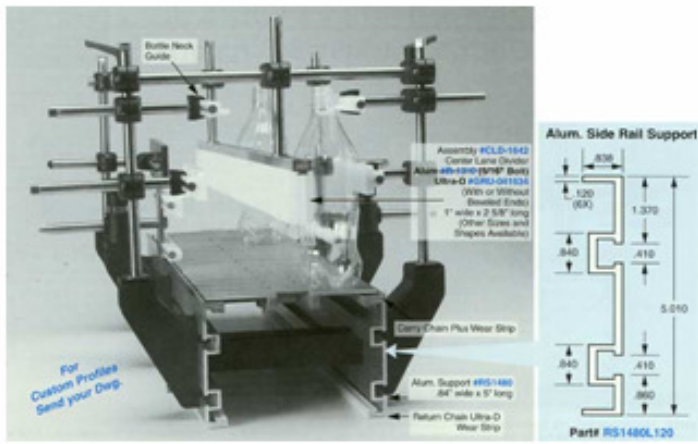
POBCO Capabilities

- Extruding
- Molding
- CNC Machining
- Screw Machining
- Turning
- Milling
- Routing
- Secondary Operations
- Assembly
- Custom Machined & Extruded Profiles & Shapes
- Die Cutting/Punching

POBCO Materials

- ULTRA-D® UHMWPE (Ultra-High Molecular Weight Polyethylene)
- Static Reduced UHMWPE
- UV Stabilized UHMWPE
- High Temperature UHMWPE (Fluid Lubricant-Filled UHMWPE)
- PLUS®
- Steel Filled UHMWPE
- High Wear CP, Black or Green
- Rulons® (Hi-Temp Food Grade 641, Bearing grades LR, J)
- Low & High Density Polyethylene (PE)
- Acetal (Delrin®, Celcon®)
- Delrin AF® (Teflon Filled Acetal)
- Delrin® (Also Lube-Filled & Oil Filled Types) (Solid Lubricant-Filled Delrin) (Fluid Lubricant-Filled High Temperature Plastic) (Lubricant-Filled Grey Nylon) (NylatronGS®)
- DELLUBE
- Nylon
- NYLUBE
- Nylon MD
- PVC (Polyvinyl Chloride) (High Heat Plastics) PTFE® Glass Filled (Urethane: Specify Durometer Reading & Color)
- TEFLON®
- Teflon
- POLYURETHANE
- POLYPROPYLENE
- Flurosint 207® (High Heat)

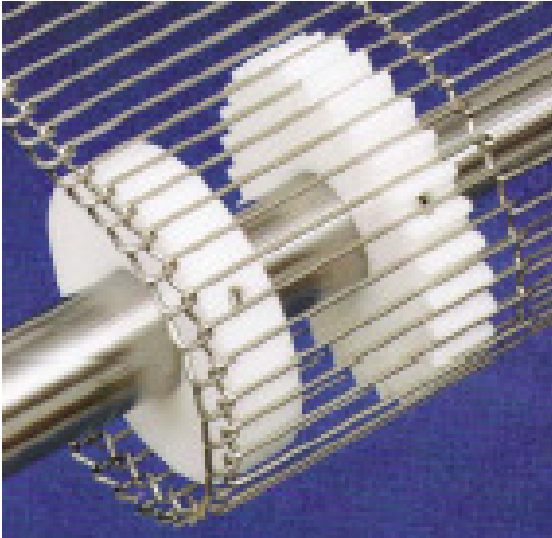
POBCO® Guides and Accessories Overview



W W



PROPER DRIVING AND PROTECTING OF FLEXX FLOW BELTS ARE THE KEYS TO GETTING LONG LIFE



Don't forget your drive components!

We can supply the sprockets, idle rollers, nose rollers as well as the wear strips and belt supports.

Your sprockets are by far the most important factor for a long, smooth running conveyor. Besides having the correct pitch, the teeth need to be tall enough to prevent slippage of the belt and low enough to allow the release of the belt. The wrong sprocket will wear the belt wires prematurely. Let us take a look at your application to assure you have proper sprockets.



And don't forget about what your belt rides on. Friction is a big reason your belt will fail. Friction means something is wearing on something else. And, something has to give. Don't let it be the belt for the cost of some inexpensive plastic. We have the wear strips and products to prevent this.



The nose rollers, in addition to tracking the belt, protect the fragile "Z" bends of the belt. By keeping the nose rollers fresh you prevent wearing out the "Z" bends and your belt. By replacing the nose rollers, with the correct size, before they wear down, you can increase the life of the belt and extend maintenance intervals. Let us show you how we can save you money.



IF YOU GLUE IT, WE CAN DO IT!

MeltPro manufactures a complete product line of hot melt adhesive dispensing equipment and has been servicing the industry since 1987 with great success. Many features have been incorporated into our product line that makes us the leader in hot melt products/components to fit Nordson®, Itw/Lti®, Slautterback® and other O.E.M. systems.

MeltPro is the only aftermarket supplier to be selected as a member of the PMMI organization (**Packaging Machinery Manufacturers Institute**). **MeltPro** was selected due to its high standards of manufacturing products, quality control procedures, engineered drawings, manufacturing facility and procedures to insure product reliability.



Let us provide a sample for you to test and see what we can do for you, and your application.



WIREMATION "GIVES TEETH" TO SPROCKET DRIVEN MESH BELTS WITH TRAXX-RITE

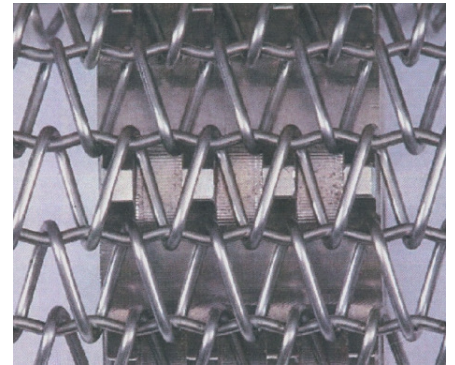
Wiremation's line of sprocket driven mesh belts, **Traxx Rite**, stops edge damage by positive tracking of the belts. By incorporating a precision made Balanced Weave Belt with a corresponding sprocket, positive tracking, both laterally and longitudinally can be achieved.

This belt is commonly used in the food industry where a tight transfer or exact timing is needed. The sprocket eliminates belt slippage when the product or process creates slippery conditions. The teeth of the sprocket meshes into the openings of the belt to create a

positive drive. This system is less expensive to purchase, and less expensive to operate than heavy chain edge belts.

Don't be fooled by others that tell you it can't be done or they are the only company that can make this happen. Wiremation has been doing this for years and has many satisfied customers. Now, with an extensive line of meshes and sprocket combinations, we can tackle your problems

Ask to see our standard product line of meshes and sprockets. Let's discuss your application and see if we can eliminate at least one of your daily headaches.



Let us show you what we can do!

Here are some of our standard meshes.

TR 18-16-16,	TR30-24-17,
TR30-31-16,	TR42-36-18,
TR48-52-17,	TR60-48-18/20



BS&k COMPANY INTEGRATES LOCAL SERVICE WITH NATIONAL KNOWLEDGE

The BS&k company has been providing local service to companies for 11 years.

Knowledge we have gained from working with national companies has allowed us to service companies locally, the way most national companies get serviced.

With 34 years experience in sales and manufacturing environments, we know how critical it is to you to have your lines up and running, when you need them up and running. We won't let you down!

Let us work with you and provide the following:

- *Plant Surveys*
- *Complimentary Product lines*
- *Competitive Pricing*
- *On-site troubleshooting*
- *Installation Assistance*
- *Order History Analysis*
- *Stocking Plans*

Contact us today and let us show you what we can do for you.

Don't forget to ask us for your No cost / no obligation review of your production lines.

We have a CD with our literature, catalogs and other information on it. Let us send one to you.

(800) 634-1114 (Toll free)
 (704) 365-6408 (Local)
 (704) 365-3578 (Fax)

www.bsandk.com

bob@bsandk.com

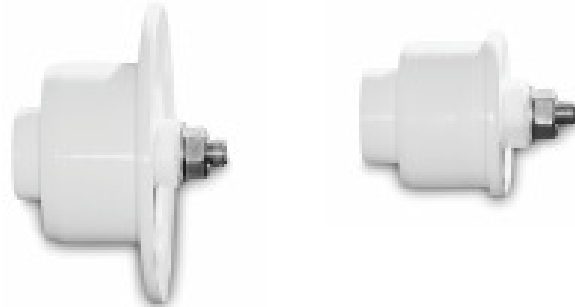


sue@bsandk.com

Featured Application

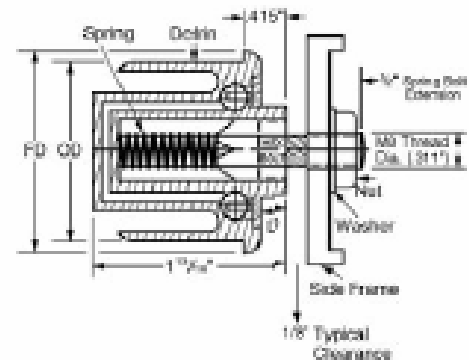
Application: Self Sealing Spring Loaded Ball Bearings

Manufacturer: POBCO



Product: These bearings are ideal for the food processing industry. They are sealed to avoid moisture and bacteria build-up in the tube. Benefits include ease of fit, ease of cleaning, lower friction, corrosion resistant, eliminates the need for stainless steel axles, no need for lubrication, and they are maintenance free.

Construction: These bearings are made from molded Delrin and assembled with 400 series stainless steel ball bearings. The stub shaft and axles are made from 300 series stainless steel. There are no components that are subject to corrosion.



PART NO.	TUBE SIZE	FD-TUBE DIA	OD-TUBE ID	D	Load Capacity Lbs
BBD24P4007SLSS	1½" Sch. 40	1.854	1.610	.250	55
BBD32P4007SLSS	2" Sch. 40	2.368	2.061	.250	55
BBD32P4007FL	2" Sch. 40	3.35	2.061	.250	55

Specifying The Right Selection: Use of these bearings can facilitate a quick change of rollers when needed while maintaining a clean conveyor. Simply looses the bolt, press the shaft in, slide up the roller and repeat in reverse.

Let us know how we can help you.