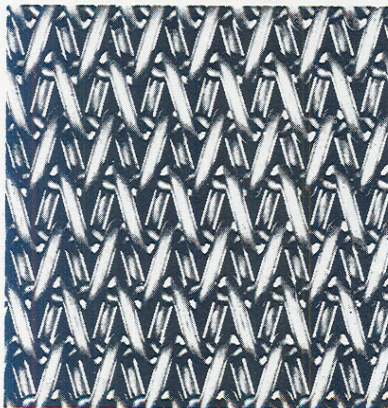


B-36-40-16	3	.063	.27 x .24	.221	1.80
B-36-32-16/18	3	.063 .047	.29 x .31	.128	1.00
B-36-30-18	3	.047	.29 x .35	.128	.84
B-42-18-11/12	3½	.120 .105	.18 x .55	.734	4.85
B-42-12-12	3½	.105	.18 x .90	.734	3.65
B-42-18-12	3½	.105	.18 x .56	.734	4.25
B-42-24-12	3½	.105	.18 x .40	.734	4.74
B-42-30-12	3½	.105	.18 x .30	.734	4.97
B-42-27-13/14	3½	.092 .080	.21 x .35	.422	2.80
B-42-23-14	3½	.080	.21 x .44	.422	2.45
B-42-27-14	3½	.080	.21 x .36	.422	2.65
B-42-31-14	3½	.080	.21 x .31	.422	3.02
B-42-40-14	3½	.080	.21 x .22	.422	3.25
B-42-41-14	3½	.080	.21 x .22	.422	3.25
B-42-36-14/16	3½	.080 .063	.22 x .25	.257	2.15
B-42-41-14/16	3½	.080 .063	.23 x .23	.257	2.30
B-42-27-16	3½	.063	.22 x .38	.257	1.75
B-42-38-16	3½	.063	.22 x .25	.257	1.90
B-42-43-16	3½	.063	.23 x .22	.257	1.99
B-42-38-16/18	3½	.063 .047	.24 x .27	.149	1.22
B-48-26-12/14	4	.105 .080	.17 x .36	.483	3.30
B-48-16-14	4	.080	.17 x .67	.483	2.25
B-48-41-14	4	.080	.17 x .21	.483	3.93
B-48-47-14	4	.080	.17 x .18	.483	4.25
B-48-23-16	4	.063	.19 x .46	.295	1.75
B-48-36-16	4	.063	.19 x .31	.295	2.30
B-48-48-16	4	.063	.19 x .19	.295	2.50
B-48-52-16	4	.063	.19 x .17	.295	2.55
B-48-55-16	4	.063	.19 x .16	.295	2.60
B-48-48-17	4	.054	.20 x .20	.220	1.63
B-48-36-18	4	.047	.20 x .29	.170	1.05
B-48-52-18	4	.047	.20 x .18	.170	1.26
B-48-50-19	4	.041	.21 x .20	.127	.96

# Balance Weave SPECIFICATIONS (Cont.)

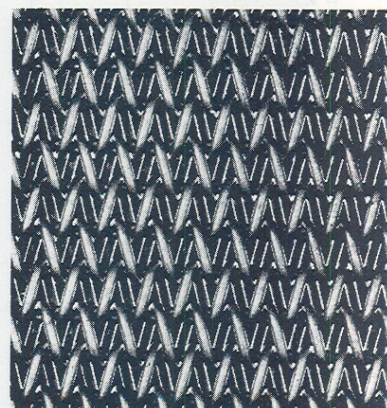
MESH DESIGNATION	APPROX. MESH	WIRE DIA.	APPROX. OPENING	C.S.A.	WEIGHT SQ. FT.
B-48-44-20	4	.035	.22 x .24	.091	.56
B-48-55-20	4	.035	.22 x .18	.091	.66
B-48-44-22	4	.0286	.23 x .25	.062	.40
B-60-22-14	5	.080	.12 x .47	.603	3.25
B-60-38-14	5	.080	.12 x .24	.603	4.25
B-60-60-14	5	.080	.12 x .12	.603	5.12
B-60-26-14/16	5	.080 .063	.14 x .38	.368	2.13
B-60-38-16	5	.063	.14 x .24	.368	2.35
B-60-42-16	5	.063	.14 x .22	.368	2.39
B-60-48-16	5	.063	.14 x .19	.368	2.65
B-60-55-16	5	.063	.14 x .16	.368	2.96
B-60-54-17	5	.054	.15 x .17	.275	2.25
B-60-37-18	5	.047	.15 x .29	.213	1.35
B-60-55-18	5	.047	.15 x .17	.213	1.48
B-60-62-18	5	.047	.15 x .15	.213	1.70
B-60-75-18	5	.047	.15 x .11	.213	1.95
B-60-60-19	5	.041	.16 x .16	.158	.90
B-72-24-16	5	.063	.10 x .44	.442	2.35
B-72-34-16	5	.063	.10 x .29	.442	2.63
B-72-56-16	5	.063	.10 x .15	.442	3.45
B-72-72-16	5	.063	.10 x .10	.442	3.80



B-42-41-14



B-48-52-18



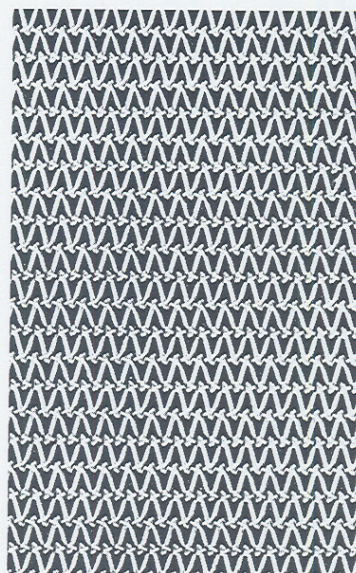
B-60-55-16

# Balance Weave SPECIFICATIONS (Cont.)

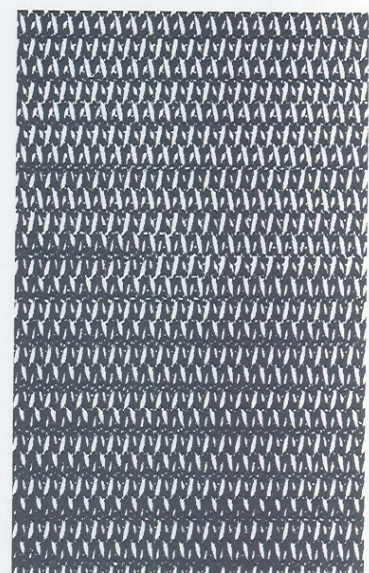
MESH DESIGNATION	APPROX. MESH	WIRE DIA.	APPROX. OPENING	C.S.A.	WEIGHT SQ. FT.
B-72-52-17	5	.054	.11 x .18	.330	2.22
B-72-41-18	5	.047	.12 x .25	.225	1.60
B-72-66-18	6	.047	.12 x .13	.255	1.80
B-72-75-18	6	.047	.12 x .11	.255	2.06
B-72-66-20	6	.035	.13 x .15	.137	.94
B-72-68-20	6	.035	.13 x .14	.137	.94
B-84-84-17	7	.054	.09 x .09	.385	3.60
B-84-84-18	7	.047	.10 x .10	.299	2.05
B-84-60-20	7	.047	.11 x .17	.160	.98
B-84-84-20	7	.035	.11 x .11	.160	1.10
B-84-84-21	7	.032	.11 x .11	.133	1.00
B-84-84-20/22	7	.032 .0268	.11 x .11	.108	.84
B-84-84-22	7	.0268	.11 x .11	.108	.76
B-96-84-20	8	.035	.09 x .11	.182	1.33
B-96-84-21	8	.032	.09 x .11	.152	1.04
B-96-90-21	8	.032	.09 x .10	.152	1.06
B-96-84-22	8	.0286	.10 x .11	.123	.90
B-96-84-22/24	8	.0286 .023	.10 x .11	.080	.66
B-144-105-20/22	12	.035 .0286	.07 x .08	.185	1.31
B-144-96-21/23	12	.032 .026	.07 x .09	.151	1.13



B-84-84-20



B-96-84-21



B-144-105-20/22