

BS&k Company

MANUFACTURERS REPRESENTATIVE

IN MOTION FOR YOU ...

Fall 2012

Volume 12, Issue 4



Paper or Plastic? Or is it Metal or Plastic?



Remember the days when you were asked Paper or Plastic, at the check out line? Well now it is almost a given. You get plastic, unless you live in one of those cities that now ban plastic shopping bags.

Plastic, successfully, made its way onto the scene because it was new, had many advantages, and the stores pushed it. They pushed it because it was much cheaper for them to offer plastic than those expensive paper bags. They were easy to carry your groceries in, they were light and easy to crumple into a ball and throw away. So , it seemed, everyone wins.

Well, looking at it years later, many are taking a second look. Environmentally these bags cause many problems with landfills, wildlife, and landscapes. Recycling seems to help, but it is not the answer.

Take a second look at your plastic belts in the same light. What happens to those belts when they are disposed of into our landfills? What actually is the cost of ownership with plastic vs metal? How much does sanitation really cost with plastic vs metal? What happens when a not metal detectable plastic belt breaks off and gets into your product. Add the cost of that into your pricing exercise.

Sure, there are applications where plastic is defiantly the way to go, but remember, for the most part, plastic only came on the scene when they could replace a metal belt. Some people feel that there was too much replacing of metal belts with plastic for the wrong reason.

Just be sure that when it to time to replace your next belt, be sure to look at all options and not just replace it with what you had.

Inside this issue:

Table with 2 columns: Article Title and Page Number. Includes items like 'Wrabacon can automate your application' (p. 2) and 'POBCO's Leveling Mounts' (p. 6).

Special points of interest:

- Wrabacon updates its website
Lumsden solves the dreaded problems of "belt snagging".
Wiremation Introduces standard sprocket driven mesh belts
REMCO Color code your plant to reduce your sanitation problems
POBCO Plastics Introduces the 2012 Catalog



WE PROVIDE SOLUTIONS TO YOUR AUTOMATION CHALLENGES

Conveyor System Automation Design and Manufacturing Company

For 25 years Wrabacon Inc. has been designing and manufactured conveyor systems for a variety of markets. These markets consist of food manufacturing companies, pharmaceutical companies, consumer goods companies and personal care. Many of these companies require stainless steel conveyors and components to meet the demanding needs of sanitation and cleanliness that has become primary concern for food and pharmaceutical safety.

Wrabacon Inc. stainless steel conveyor systems are designed for ease of cleaning and sanitation. Stainless steel frames are engineered with open design to allow for your sanitation team to effectively clean and sanitize for the next working shift. All designs meet or exceed USDA, FDA and BISC standards.

Stainless steel conveyor system not required, Wrabacon can fabricate and design a conveyor system utilizing mild steel frames and non wash down components which will provide a conveyor system to move your product through your manufacturing, process or packaging area.

A full range of modular plastic belts, table top chain, wire and synthetic belts are available and are selected for the best solution for your conveyor system. All conveyor system controls, automation and PLC programming are designed and implanted in house by our experienced electrical department. Mild steel, fiberglass and stainless steel cabinets are all available to meet your conveyor system requirements.

Automated Conveyor System Features and Benefits

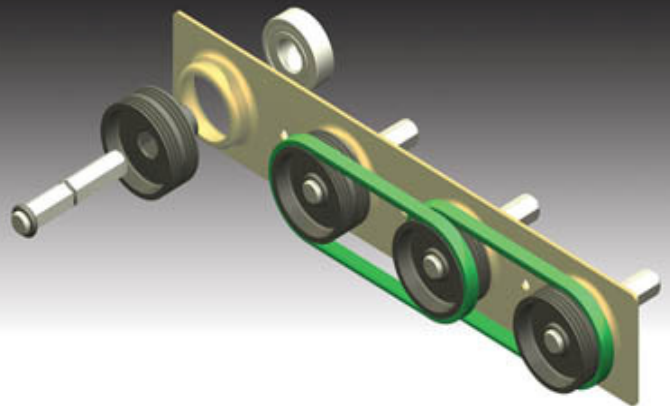
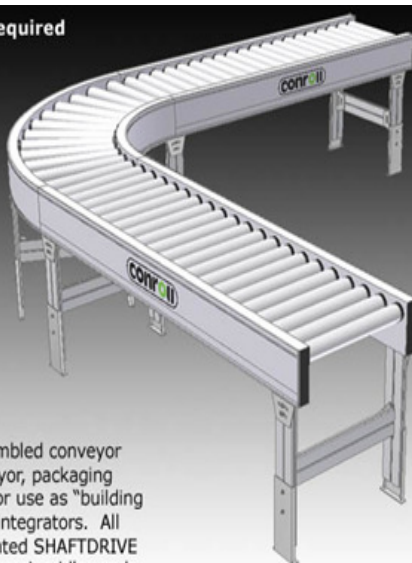
Complete product handling and automated conveying systems
Each System designed to meet the specific requirements of the customer and product

Various types of conveyors available based on customer requirements
Mild steel, painted steel and stainless conveyors available



CONROLL PRODUCES ACCUMULATING CONVEYORS WITH LOW AND ZERO BACKPRESSURE

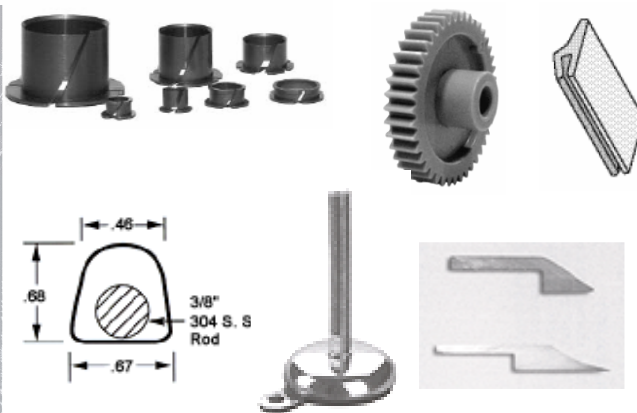
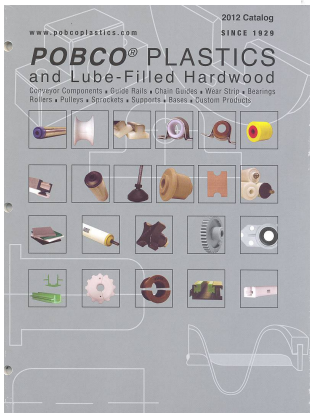
- No exposed belts or guards required
- Safe, low voltage 24 VDC brushless motors
- Perfect for transport and zero pressure accumulation
- IP65-rated sanitary modules for wash-down and food applications also available



Conroll produces a variety of pre-assembled conveyor modules for use by OEMs in the conveyor, packaging and processing industries, as well as for use as "building blocks" for material handling systems integrators. All of our modules are based on the patented SHAFTDRIVE design, utilizing precision ground ball bearing idler and drive cartridges mounted within the conveyor side frames.



POBCO PLASTICS LATEST CATALOG HAS MANY NEW ITEMS TO REDUCE YOUR FRICTION AND YOUR COSTS



POBCO Products

- Plastic Guide Rails
- Plastic, Stainless Steel Brackets
- Rollers (Plastic, Steel & Wood)
- Bearings (Plastic & Wood)
- Plastic Sheet Stock
- Plastic & Wood Rod Stock
- FEP Shrink Fit Roll Covers
- Special Rollers
- Teflon Coated Fabric/Tapes/Belts
- Pressure Sensitive Plastic Adhesive Wear Tape

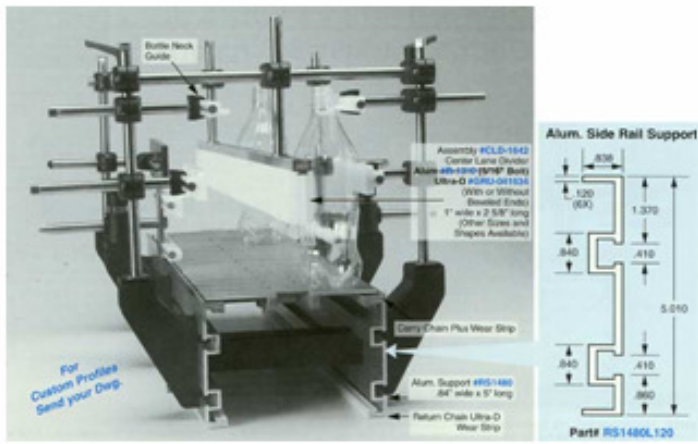
POBCO Capabilities

- Extruding
- Molding
- CNC Machining
- Screw Machining
- Turning
- Milling
- Routing
- Secondary Operations
- Assembly
- Custom Machined & Extruded Profiles & Shapes
- Die Cutting/Punching

POBCO Materials

- ULTRA-D® UHMWPE (Ultra-High Molecular Weight Polyethylene)
- Static Reduced UHMWPE
- UV Stabilized UHMWPE
- High Temperature UHMWPE (Fluid Lubricant-Filled UHMWPE)
- PLUS®
- Steel Filled UHMWPE
- High Wear CP, Black or Green
- Rulons® (Hi-Temp Food Grade 641, Bearing grades LR, J)
- Low & High Density Polyethylene (PE)
- Acetal (Delrin®, Celcon®)
- Delrin AF® (Teflon Filled Acetal)
- Delrin® (Also Lube-Filled & Oil Filled Types) (Solid Lubricant-Filled Delrin) (Fluid Lubricant-Filled High Temperature Plastic) (Lubricant-Filled Grey Nylon) (NylatronGS®)
- DELLUBE
- Nylon
- NYLUBE
- Nylon MD
- PVC (Polyvinyl Chloride) (High Heat Plastics) PTFE® Glass Filled (Urethane: Specify Durometer Reading & Color)
- TEFLON®
- Teflon
- POLYURETHANE
- POLYPROPYLENE
- Flurosint 207® (High Heat)

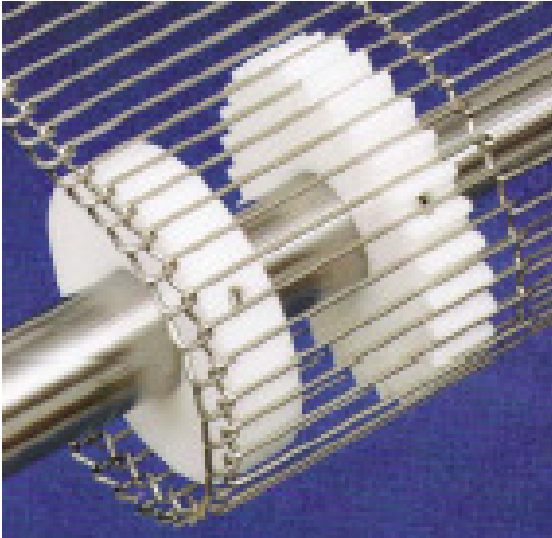
POBCO® Guides and Accessories Overview



W W



PROPER DRIVING AND PROTECTING OF FLEXX FLOW BELTS ARE THE KEYS TO GETTING LONG LIFE



Don't forget your drive components!

We can supply the sprockets, idle rollers, nose rollers as well as the wear strips and belt supports.

Your sprockets are by far the most important factor for a long, smooth running conveyor. Besides having the correct pitch, the teeth need to be tall enough to prevent slippage of the belt and low enough to allow the release of the belt. The wrong sprocket will wear the belt wires prematurely. Let us take a look at your application to assure you have proper sprockets.



And don't forget about what your belt rides on. Friction is a big reason your belt will fail. Friction means something is wearing on something else. And, something has to give. Don't let it be the belt for the cost of some inexpensive plastic. We have the wear strips and products to prevent this.

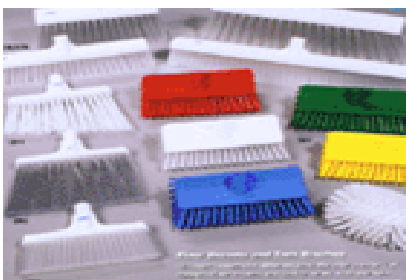


The nose rollers, in addition to tracking the belt, protect the fragile "Z" bends of the belt. By keeping the nose rollers fresh you prevent wearing out the "Z" bends and your belt. By replacing the nose rollers, with the correct size, before they wear down, you can increase the life of the belt and extend maintenance intervals. Let us show you how we can save you money.



REMCO KEEPS YOUR WORKPLACE CLEAN AND SANITARY

Let REMCO help you keep your workplace clean and sanitary with brushes, squeegees, scoops, shovels, brushes, scrapers and pails. All with each department's own color code.





WIREMATION "GIVES TEETH" TO SPROCKET DRIVEN MESH BELTS WITH TRAXX-RITE

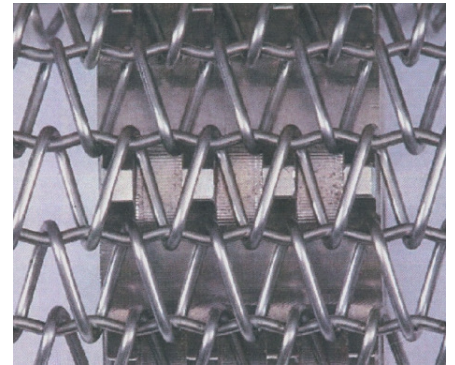
Wiremation's line of sprocket driven mesh belts, **Traxx Rite**, stops edge damage by positive tracking of the belts. By incorporating a precision made Balanced Weave Belt with a corresponding sprocket, positive tracking, both laterally and longitudinally can be achieved.

This belt is commonly used in the food industry where a tight transfer or exact timing is needed. The sprocket eliminates belt slippage when the product or process creates slippery conditions. The teeth of the sprocket meshes into the openings of the belt to create a

positive drive. This system is less expensive to purchase, and less expensive to operate than heavy chain edge belts.

Don't be fooled by others that tell you it can't be done or they are the only company that can make this happen. Wiremation has been doing this for years and has many satisfied customers. Now, with an extensive line of meshes and sprocket combinations, we can tackle your problems

Ask to see our standard product line of meshes and sprockets. Let's discuss your application and see if we can eliminate at least one of your daily headaches.



Let us show you what we can do!

Here are some of our standard meshes.

TR 18-16-16,	TR30-24-17,
TR30-31-16,	TR42-36-18,
TR48-52-17,	TR60-48-18/20



BS&k COMPANY INTEGRATES LOCAL SERVICE WITH NATIONAL KNOWLEDGE

The BS&k company has been providing local service to companies for 11 years.

Knowledge we have gained from working with national companies has allowed us to service companies locally, the way most national companies get serviced.

With 34 years experience in sales and manufacturing environments, we know how critical it is to you to have your lines up and running, when you need them up and running. We won't let you down!

Let us work with you and provide the following:

- *Plant Surveys*
- *Complimentary Product lines*
- *Competitive Pricing*
- *On-site troubleshooting*
- *Installation Assistance*
- *Order History Analysis*
- *Stocking Plans*

Contact us today and let us show you what we can do for you.

Don't forget to ask us for your No cost / no obligation review of your production lines.

We have a CD with our literature, catalogs and other information on it. Let us send one to you.

(800) 634-1114 (Toll free)
 (704) 365-6408 (Local)
 (704) 365-3578 (Fax)

www.bsandk.com

bob@bsandk.com



sue@bsandk.com

Featured Application

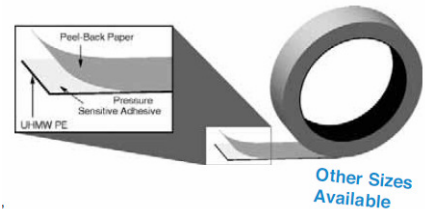
Wear Tape

Application: Reducing friction at wear points



Manufacturer: POBCO Plastics

Product: Wear tape is simply a piece of a plastic material that is cut to specific thickness and width and is rolled into a coil. It is available with and without an adhesive backing. There are many sizes.



Construction: We list several sizes in our catalog, and several material types. Some are stocked in 50 foot rolls and many other sizes and materials are available upon request.

Specifying The Right Selection: How many times have you had something come loose or off that causes parts to stick, scrape, squeal or even get damaged. Spraying it with a good old can of WD40 would fix it for a while, but your product probably can tolerate a bath of oil. What if you had a roll of say, .030 X 1" UHMW. Or .030 X 3" of Dry Wear tape. With an adhesive backing, you could take a 1 foot or 10 foot piece, remove the backing and slap onto the section where that product is hitting. Is it a permanent fix? Maybe yes, but probably not. It does however let you finish the shift until you have a time to stop and make a permanent repair. Let us know if you need a size listed, or a material not listed. These are a great thing for every maintenance person to carry around in their tool box.

Ask for a quote today!

Dimensions	Part Number with PSA	Part Number without PSA
.010" x 1/2"	WT*010008C50A	WT*010008C50
.010" x 1	WT*010016C50A	WT*010016C50
.010" x 1 1/2"	WT*010024C50A	WT*010024C50
.010" x 3"	WT*010048C50A	WT*010048C50
.030" x 1/2"	WT*030008C50A	WT*030008C50
.030" x 1"	WT*030016C50A	WT*030016C50
.030" x 1 1/2"	WT*030024C50A	WT*030024C50
.030" x 3"	WT*030048C50A	WT*030048C50
.040" x 1/2"	WT*040008C50A	WT*040008C50
.040" x 1"	WT*040016C50A	WT*040016C50
.040" x 1 1/2"	WT*040024C50A	WT*040024C50
.040" x 3"	WT*040048C50A	WT*040048C50
.060" x 1/2"	WT*060008C50A	WT*060008C50
.060" x 1"	WT*060016C50A	WT*060016C50
.060" x 1 1/2"	WT*060024C50A	WT*060024C50
.060" x 3"	WT*060048C50A	WT*060048C50
.125" x 1/2"	WT*125008C50A	WT*125008C50
.125" x 1"	WT*125016C50A	WT*125016C50
.125" x 1 1/2"	WT*125024C50A	WT*125024C50
.125" x 3"	WT*125048C50A	WT*125048C50
.250" x 1"	N/A	WS*0416C100
.250" x 1 1/2"	N/A	WS*0424C100
.250" x 2"	N/A	WS*0432C100
.250" x 3"	N/A	WS*0448C100

it

Let us know how we can help you.