

## Winter 2013

Volume 13, Issue 1

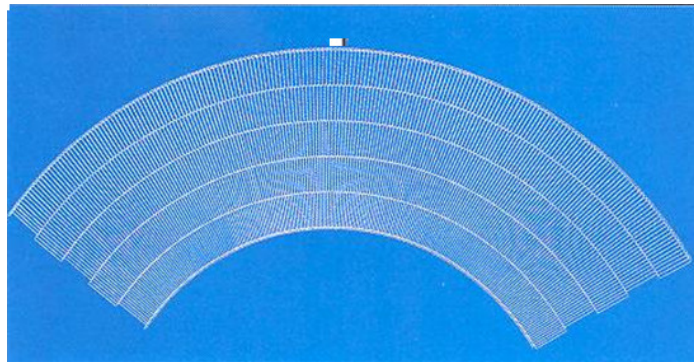


### Fixed Turn 90 Degree or 180 Degree belts, now available

Lumsden Flexx Flow belting continues to add to the product line with the introduction of the offering of their Flexx Flow Turn Belts.

When the need to divert a line from one process to another, or just the need to go around a corner, Lumsden Flexx Flow Turn Belts are your solution.

Our line includes 10" wide left and right hand turns. 16" wide left and right hand turns. 24" wide left and right hand turns. 34" wide left and right hand turns.



42" wide left and right hand turns. And 50" wide left and right hand turns. If you require a different width, just let us know. We can also produce a 180 degree turn in addition to a 90 degree turn.

The pricing of these belts seem to be pretty attractive at this time. Until we get further along with the requirements, our deliveries are going to be 2—3 weeks. We intend to work towards keeping the most popular belts in stock.

Let's look at your requirements for straight running Flexx Flow Belts as well as the Flexx Flow Turn Belts. We think you will be pleased. Give us a call to see how we can be of service.

#### Inside this issue:

Wrabacon can automate your application	2
Conroll moves product without damage	2
POBCO brings out the 2012 catalog	3
Lumsden's drive components save you \$	4
REMCO sanitation tools, in colors!	4
...On A Personal Note	5
Flat Wire Belting	6

#### Special points of interest:

- **Wrabacon** updates its website
- **Lumsden** solves the dreaded problems of "belt snagging".
- **Wiremation** Introduces standard sprocket driven mesh belts
- **REMCO** Color code your plant to reduce your sanitation problems
- **POBCO Plastics** Introduces the 2012 Catalog



## WE PROVIDE SOLUTIONS TO YOUR AUTOMATION CHALLENGES

### Conveyor System Automation Design and Manufacturing Company

For 25 years Wrabacon Inc. has been designing and manufactured conveyor systems for a variety of markets. These markets consist of food manufacturing companies, pharmaceutical companies, consumer goods companies and personal care. Many of these companies require stainless steel conveyors and components to meet the demanding needs of sanitation and cleanliness that has become primary concern for food and pharmaceutical safety.

Wrabacon Inc. stainless steel conveyor systems are designed for ease of cleaning and sanitation. Stainless steel frames are engineered with open design to allow for your sanitation team to effectively clean and sanitize for the next working shift. All designs meet or exceed USDA, FDA and BISC standards.

Stainless steel conveyor system not required, Wrabacon can fabricate and design a conveyor system utilizing mild steel frames and non wash down components which will provide a conveyor system to move your product through your manufacturing, process or packaging area.

A full range of modular plastic belts, table top chain, wire and synthetic belts are available and are selected for the best solution for your conveyor system. All conveyor system controls, automation and PLC programming are designed and implanted in house by our experienced electrical department. Mild steel, fiberglass and stainless steel cabinets are all available to meet your conveyor system requirements.

#### Automated Conveyor System Features and Benefits

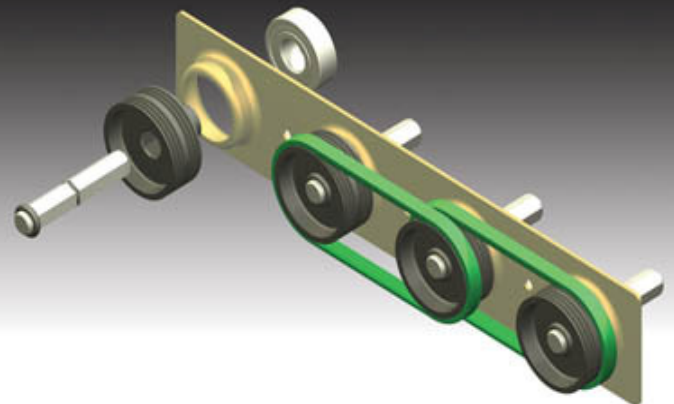
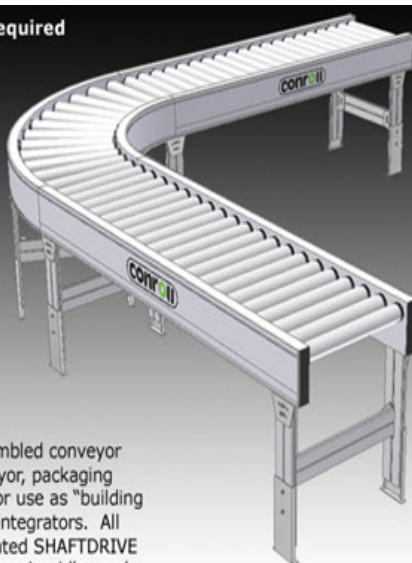
Complete product handling and automated conveying systems  
Each System designed to meet the specific requirements of the customer and product

Various types of conveyors available based on customer requirements  
Mild steel, painted steel and stainless conveyors available



## CONROLL PRODUCES ACCUMULATING CONVEYORS WITH LOW AND ZERO BACKPRESSURE

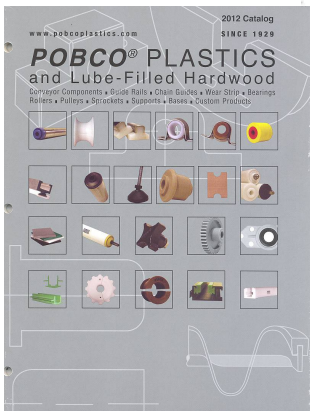
- No exposed belts or guards required
- Safe, low voltage 24 VDC brushless motors
- Perfect for transport and zero pressure accumulation
- IP65-rated sanitary modules for wash-down and food applications also available



Conroll produces a variety of pre-assembled conveyor modules for use by OEMs in the conveyor, packaging and processing industries, as well as for use as "building blocks" for material handling systems integrators. All of our modules are based on the patented SHAFTDRIVE design, utilizing precision ground ball bearing idler and drive cartridges mounted within the conveyor side frames.



# POBCO PLASTICS LATEST CATALOG HAS MANY NEW ITEMS TO REDUCE YOUR FRICTION AND YOUR COSTS



- Our Product Lines Include:**
- > Wood Bearings
  - > Plastic Bearings
  - > Guide Rails
  - > Chain Guides
  - > Wear Strip
  - > Custom Profiles & Parts
  - > Rollers
  - > Pulleys
  - > Sprockets
  - > Chain Tensioners
  - > Bases
  - > Custom Products

POBCO can cross reference parts from: McMaster, Grainger, MSC, Martin, Boston Gear and Other Suppliers

## POBCO Products

- Plastic Guide Rails
- Plastic, Stainless Steel Brackets
- Rollers (Plastic, Steel & Wood)
- Bearings (Plastic & Wood)
- Plastic Sheet Stock
- Plastic & Wood Rod Stock
- FEP Shrink Fit Roll Covers
- Special Rollers
- Teflon Coated Fabric/Tapes/Belts
- Pressure Sensitive Plastic Adhesive Wear Tape

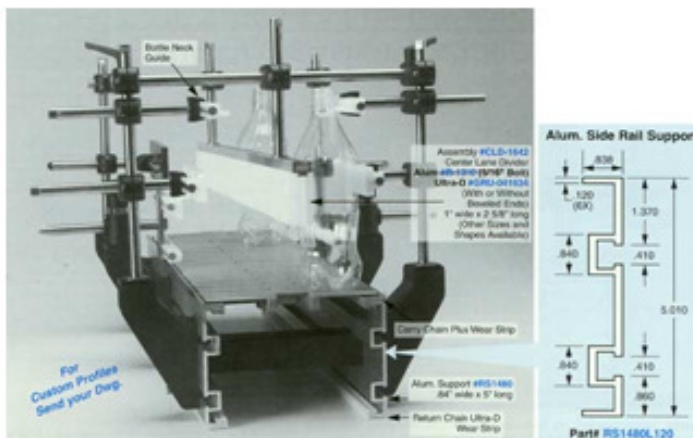
## POBCO Capabilities

- Extruding
- Molding
- CNC Machining
- Screw Machining
- Turning
- Milling
- Routing
- Secondary Operations
- Assembly
- Custom Machined & Extruded Profiles & Shapes
- Die Cutting/Punching

## POBCO Materials

- ULTRA-D® UHMWPE (Ultra-High Molecular Weight Polyethylene)
- Static Reduced UHMWPE
- UV Stabilized UHMWPE
- High Temperature UHMWPE (Fluid Lubricant-Filled UHMWPE)
- PLUS®
- Steel Filled UHMWPE
- High Wear CP, Black or Green
- Rulons® (Hi-Temp Food Grade 641, Bearing grades LR, J)
- Low & High Density Polyethylene (PE)
- Acetal (Delrin®, Celcon®)
- Delrin AF® (Teflon Filled Acetal)
- Delrin® (Also Lube-Filled & Oil Filled Types) (Solid Lubricant-Filled Delrin) (Fluid Lubricant-Filled High Temperature Plastic) (Lubricant-Filled Grey Nylon) (NylatronGS®)
- DELLUBE
- Nylon
- NYLUBE
- Nylon MD
- PVC (Polyvinyl Chloride) (High Heat Plastics) PTFE® Glass Filled (Urethane: Specify Durometer Reading & Color)
- TEFLON®
- Teflon
- POLYURETHANE
- POLYPROPYLENE
- Flurosint 207® (High Heat)

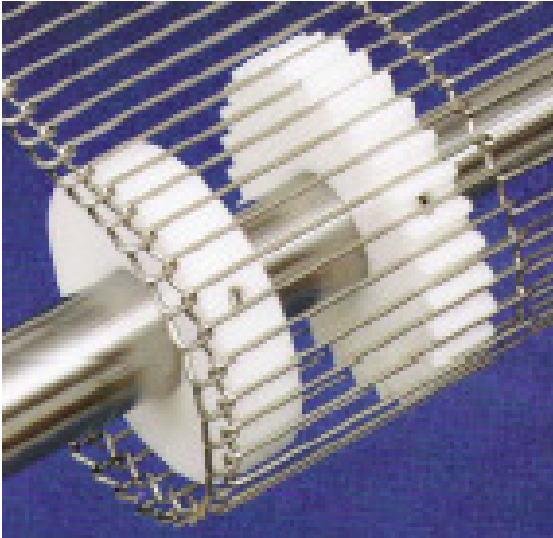
## POBCO® Guides and Accessories Overview



W W



## PROPER DRIVING AND PROTECTING OF FLEXX FLOW BELTS ARE THE KEYS TO GETTING LONG LIFE



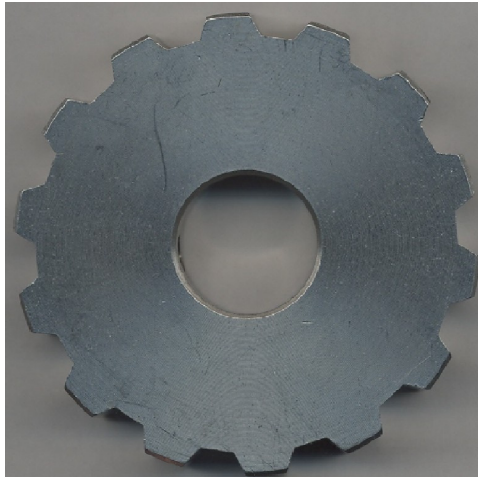
### **Don't forget your drive components!**

We can supply the sprockets, idle rollers, nose rollers as well as the wear strips and belt supports.

Your sprockets are by far the most important factor for a long, smooth running conveyor. Besides having the correct pitch, the teeth need to be tall enough to prevent slippage of the belt and low enough to allow the release of the belt. The wrong sprocket will wear the belt wires prematurely. Let us take a look at your application to assure you have proper sprockets.



And don't forget about what your belt rides on. Friction is a big reason your belt will fail. Friction means something is wearing on something else. And, something has to give. Don't let it be the belt for the cost of some inexpensive plastic. We have the wear strips and products to prevent this.

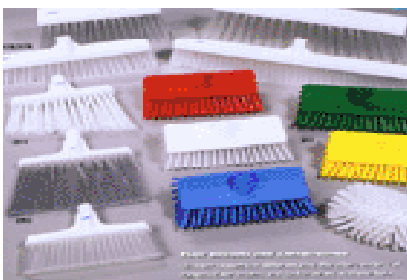


The nose rollers, in addition to tracking the belt, protect the fragile "Z" bends of the belt. By keeping the nose rollers fresh you prevent wearing out the "Z" bends and your belt. By replacing the nose rollers, with the correct size, before they wear down, you can increase the life of the belt and extend maintenance intervals. Let us show you how we can save you money.



## REMCO KEEPS YOUR WORKPLACE CLEAN AND SANITARY

Let REMCO help you keep your workplace clean and sanitary with brushes, squeegees, scoops, shovels, brushes, scrapers and pails. All with each department's own color code.



## ... ON A PERSONAL NOTE



We would like to take a moment to say a genuine Thank You to our customers, business relationships, friends and family for sticking with us for these so many years. This is a business that I truly enjoy and feel that Sue and I have something to offer. We don't think of ourselves as another sales organization. We have tried to build long and lasting relationships with everyone we meet and do business with. Some closer than others, but we try to do the same to all.

These last two years have been especially difficult for us, and me in particular.

After putting my father in an Alzheimer's care unit in the Boston area in October of 2010 I began to walk with a limp in my right leg. When I lift my leg, my foot would drop down. Shortly after it became a sharp pain in my upper leg and back side. It actually prevented me from walking very far without either having to stop or getting a lot of pain. The Doctors assured me it was a "classic pinched sciatica nerve". After taking x-rays, they assured me that it would get better in a few days or weeks. Next I was told that a chiropractor could fix me up in 10 or 15 visits. To no avail. Back to the first Doctor and in for an MRI. He told me that he could not find anything to cut to relieve the pain. Still not able to walk normally, the pain kept getting worse.

Then it was off to a Sports Medicine Doctor for spine decompres-

sion, shock treatment and vibrations. 8 sessions of that, no improvement.

The first Dr. said I needed to get an EMG test. That tests all the nerves in the leg to see if any are not functioning. The EMG showed some poor activity in the lower part of my right leg, but nothing that should prohibit me from walking. But I could not.

Again, back to the pain meds and waiting games. Still unable to walk well, lots of pain and onto crutches.

In December of 2011 I noticed that the right leg was improving a lot, but since I had been using the left leg for everything it began to weaken then I could not walk on it. The only way I could put any weight on it was to "lock the knee". Thank goodness for the crutches. In January of 2012, on crutches, unable to walk and a lot of pain, I went to some "specialists" of the spine. They too said it was a pinched sciatica nerve and ordered a shot of steroids in my sciatica nerve. 2 or 3 days and then back to where I was. They then ordered a CT Scan. It did not show a pinch point that could be corrected. More pain meds. These knocked me out. I slept a lot and could close my eyes at any time of the day for a "quick" 2 hour nap.

As you can guess I was not able to make any sales calls which I regret and missed. It hurt my business a lot. Determined to find an

answer to this problem it was off to a neurologist. He examined me and diagnosed it as Diabetic Neuropathy. As they explained. it was similar to a stroke of the nerves. From the waist down, most of the nerves died. The nerves do grow back, but slowly. He said that since the right leg is almost all better, the left one should get better as well. All I can do is wait for time to heal it. As of right now, Christmas time, I still have pain in my left leg and feet when I walk. Not like the sharp jabbing pain I had a year or so ago. I can walk on both legs with bent knees so that is a huge improvement. No longer do I have to lock my knee or fall down.

So as of now I can walk slowly with only a cane. I fully expect to continue to get better and hopefully soon, I will be with walking without a cane.

The really exciting thing for me is that I plan to begin making sales calls again after the first of the year. It won't be 100% but it will help me to get back into what I enjoy and feel I am good at.

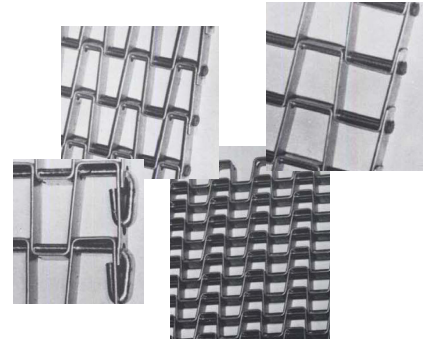
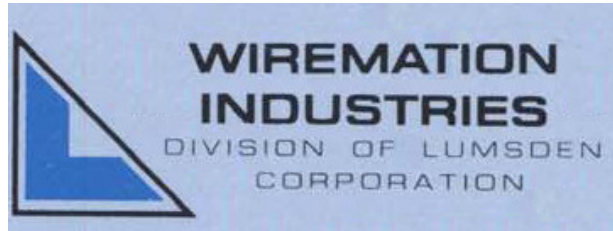
So, thank you for being patient with me over these last 2 years. Thank you for the business you have sent me and hopefully I will be calling you soon to arrange a time to meet with you. We are looking forward to a very good New Year and we wish the same to you.

Thank You, again.

# Featured Application

**Application:** Flat Wire Belting: General Conveying

**Principal:**



**Product:** A flat wire belt is a series of pickets joined by connecting rods. It comes in either a nominal 1" pitch or 1/2" pitch.

It is also available in a 1X1, 1/2 X 1 or 1/2X1/2 opening sizes.

Materials: Hi Carbon, Galvanized, 304 SS or 316SS

Additionally flat wire is available in a:

Standard duty: 3/8" wide X .046 thick strip and an 11 ga rod, clinched or welded rod.

Heavy duty: 1/2" wide X .062 thick strip and a 6 ga rod, clinched or welded rod.

Flat wire belting has been around longer than most of us. While it is limited in the pitch, opening sizes and materials, there are many uses for a flat wire belt. Filtering, washing, baking, canning, drying, painting, packaging and product transfer to mention only a few.

This simple, durable family of belts is a great selection for many applications, however, if they are not set up correctly, they, like all belts can cause nothing but problems.

As the diagram below shows, sprocket teeth must be tall enough to drive the belts, and not too tall to protrude above the belt surface causing release problems. Additionally, sprocket teeth must drive on the rods and idle on the rods. Again, referring to the diagram, never drive or idle in the outside openings. The rod does not have enough support here to avoid bending. Also, center the teeth in the openings. Don't try to finitely track the belt with the teeth. Pushing the teeth to the outside of the openings will only cause the teeth to be shaven thin on the sides or worse case allow the belt to ride on top of the teeth. And the belt does not need to be bow string tight, but remember the belt will stretch, watch the slack. And, the hubs on the sprockets should all face the same direction. This will align the teeth across the width of the belt correctly for driving.

